

***Your Requirements –  
Our Machining Solutions***





Management Team: Stefan Dieterle, Petra Dieterle-Müller, Michael Dieterle

## Top Solutions for All in Machining

Do you occasionally face the challenge of getting chips to fly perfectly?

Our highly qualified team, whom we proudly refer to as family, has likely already discovered an elegant, stable, and process-safe solution for you. Driven by our Swabian instinct to make things increasingly precise, effective, or efficient, we continuously optimize what may seem like the best solutions or even rethink them entirely.

Together, overcoming challenges brings us pure joy.

### Our Services for Tools "That Get the Job Done Right":

- Tool Design
- Construction Drawings and 3D Models
- Precision Ground Tools
- Coating Service
- Application Guidelines
- Regrinding Service







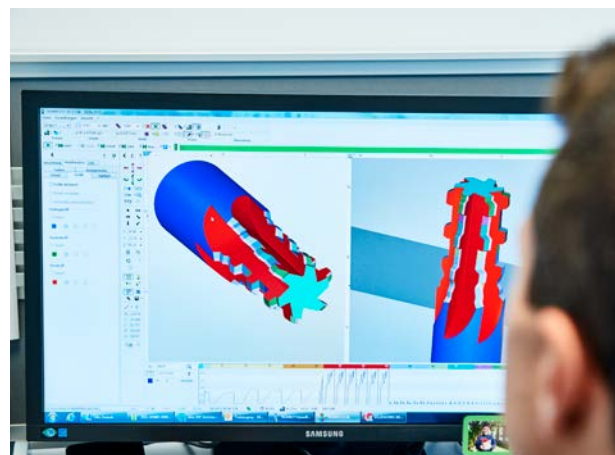
## High-Performance Tools & Service

For over 60 years, the Dieterle family has been developing solutions. From this rich vast wealth of experience, we have created an exceptionally wide range of high-end standard tools and flexible custom tool systems, which many customers value.

The highest precision, the best raw materials, and Dieterle manufacturing quality drive us and ensure satisfaction around the globe.

### Dieterle at a glance:

- Founded in 1962 by Otto Dieterle
- Family-owned in its 2nd generation
- Located in Rottweil - Germany
- Over 15,000 deliveries to more than 1,500 customers p.a.
- Over 4,500 tools in the standard range
- Very satisfied customers in over 50 countries



## Standard Tools



Part-off systems



Turning tools



Thread chasing tools



Ultra-hard cutting materials



Plastic tools



Turning tools for sliding head machines



Polygon cutters

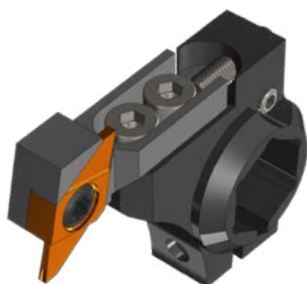


Knurling tools

## Special Tools



Form grooving systems shank holders



Form grooving systems machine related interfaces



Form grooving tools out of tool holder bits



Thread whirling tools

---

---

# Internal Machining

---

---

## Standard Tools

---

---



Drills and mills (micro)



Turning tools



Threading tools



Broaches and punches



System MFE  
(4 + 6 mm  $\varnothing$ )

## Special Tools

---

---



Drills/mills  
(form and step drills,  
special mills)



Thread whirling tools



Internal grooving  
and face grooving tools



Broaches/punches  
(various symmetrical  
profiles)





## Each Tool is Worth the High Efforts

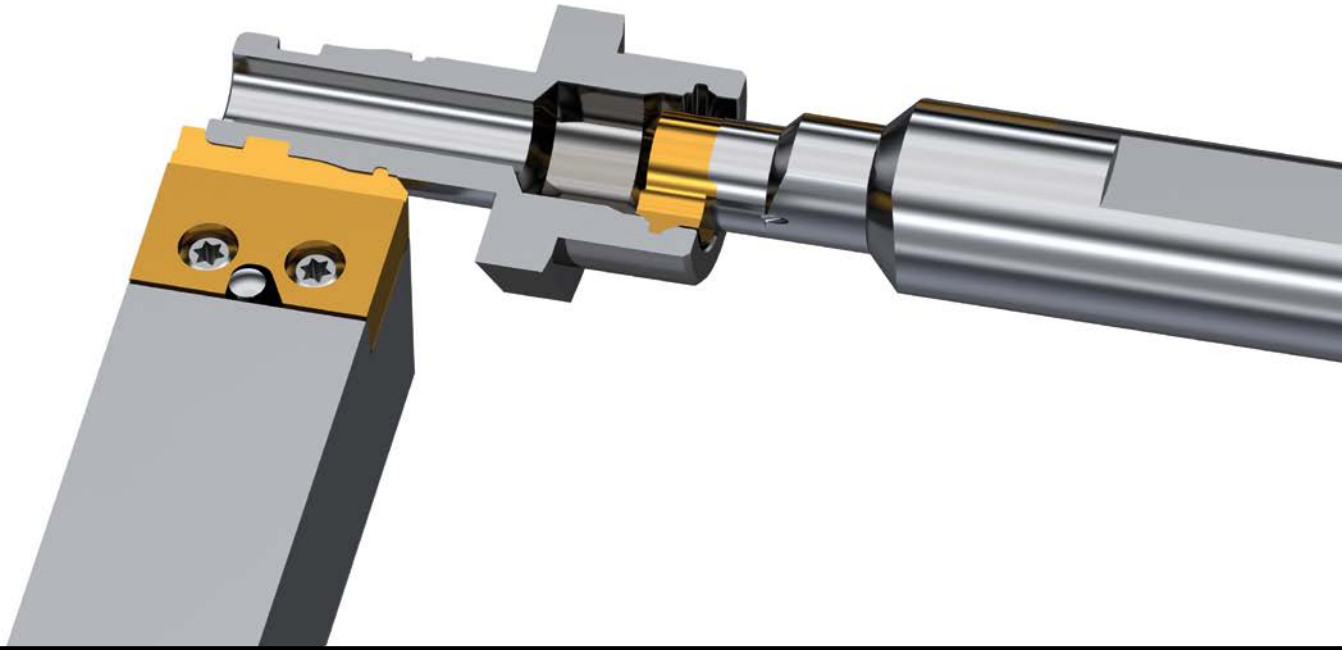
The multitude of established tool solutions inspires us to closely examine the unique aspects of each request. Often, the requirements are specific, and our custom tools provide the perfect solution for the most efficient manufacturing processes. These cases are our specialty! With our experience, we accompany you from the initial idea to the finished workpiece.

Our dedicated team of experienced specialists meticulously analyzes your requirements and drawings, and constructs the optimally sharpened tool tailored to your needs using the latest software tools. We simulate the application for you and increase tool life by utilizing our vast wealth of experience.

With our state-of-the-art machinery and passionate professionals who embody Dieterle-quality, we precisely grind your tool to achieve exceptional sharpness.

We rely on the conscientiousness of our employees. When it comes to micrometer ( $\mu\text{m}$ ) precise tools of Dieterle quality, the latest measuring machines must support us, because:  
"We do not allow deviations!"





## Quality Forms Trust

The highest quality raw materials, excellent service, and precision down to the smallest detail ensure the durability – both of our tools and our valuable business relationships. Clients from the fields of electrical engineering and electronics, medical technology, watch and jewelry industry, fluid technology, aerospace, mechanical engineering, defense, measurement technology, as well as the automotive industry and many other highly demanding sectors confidently rely on us.

## Innovation Driven by Experience

We continuously invest in modern machinery, the latest software, and the training and development of our employees. This way, we combine the valuable insights of the past with the most advanced manufacturing methods and innovative minds.







[www.linkedin.com/company/dieterle-tools](http://www.linkedin.com/company/dieterle-tools)



[www.instagram.com/dieterle\\_tools/](http://www.instagram.com/dieterle_tools/)



[www.facebook.com/DieterleTools/](http://www.facebook.com/DieterleTools/)



[www.youtube.com/@dieterle-tools](http://www.youtube.com/@dieterle-tools)



[www.dieterle-tools.com](http://www.dieterle-tools.com)

# Otto Dieterle Spezialwerkzeuge GmbH

Predigerstr. 56  
78628 Rottweil, Germany

Tel.: +49 (0) 741 / 9 42 05 - 0  
Fax: +49 (0) 741 / 9 42 05 - 50  
Email: [info@dieterle-tools.com](mailto:info@dieterle-tools.com)

[www.dieterle-tools.com](http://www.dieterle-tools.com)

