



New Tools for Plastic Machining

Dear business partners,

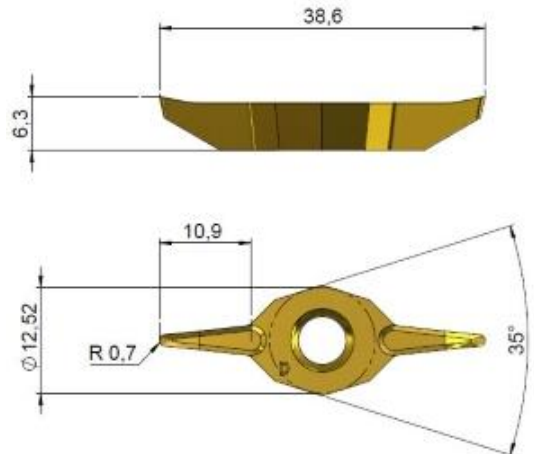
We have extended our unique range of plastic machining tools by two new systems:

System SDAC-KP-2235

The carbide insert KP-VCGT-22-S is the big brother of KP-VCGT-16-S and is especially appropriate for copying plastic profiles with large forming depths:

- Cutting depth up to 10,5 mm
- Pointed angle 13°
- R 0,7

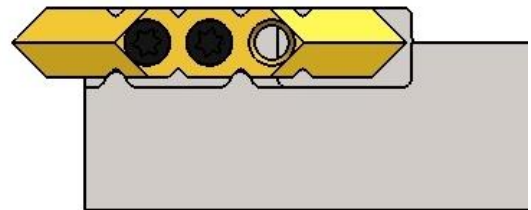
For further information to our system SDAC-KP-2235 please click [here](#).



System KH-H

Tool holder with incorporated centre height through heightened plate seat (centre height = upper edge of shank). Most appropriate for turning lathes / long-turning lathes at which you cannot adjust the centre height via the Y axis (fixed tool holder).

You will find further information to our system KH-H when you click [here](#).



The catalogue showing our complete range of plastic machining tools is available [here](#).

If you have any questions, please contact us. We are looking forward to your inquiries!

Best regards

Michael Dieterle, Stefan Dieterle, Petra Dieterle-Müller,
with the whole team of Otto Dieterle Spezialwerkzeuge GmbH

Otto Dieterle Spezialwerkzeuge GmbH

Predigerstr. 56, 78628 Rottweil, Germany

Phone: +49 (0)741 94205-0 - Fax: +49 (0)741 94205-50 - info@dieterle-tools.com

www.dieterle-tools.com

Register court: Amtsgericht Stuttgart, HRB 470292 – Management: Michael Dieterle, Stefan Dieterle

In case you no longer wish to receive our newsletter, please let us know by replying to this e-mail with the subject "unsubscribe" – or click [here](#).