

Rottweil, 14<sup>th</sup> April 2023

## Wide range of tools for machining precious metals

C.HAFNER is one of the leading companies in Europe in the field of precious metal technology. In addition to precious metal separation, i.e. the recycling of precious metals, C.HAFNER develops and produces innovative alloys, cast materials, semi-finished products, solders as well as components made of precious metals.

As a specialist for the production and processing of precious metal alloys, C.HAFNER manufactures components according to customer-specific requirements for a wide range of industries. Precious metals such as silver, gold and platinum have special challenges when it comes to machining. To



From left: Daniel Malthaner, Tool Purchasing at C.HAFNER, and Peter Rottler, Field Service at Dieterle

achieve maximum precision and process reliability, C.HAFNER relies on precision tools from Dieterle, a company based in Rottweil, Germany, for component production. "Dieterle offers a wide range of tools that are necessary and useful for our production," comments Daniel Malthaner, who is responsible for tool purchasing at C.HAFNER. "In particular, we must mention the clearly arranged and well-described range of tools available for Escomatic machines. In addition, the price-performance ratio is very good." he continues.

In the field of turning technology, complex components in the diameter range from 0.2 to 52 mm can be machined from the rod at C.HAFNER. Machines of the type Traub TNL18 as well as Escomatic D2 and NM are used for the production of workpieces made of precious metal for flow measurements in analytics and medical technology. Form drills, special reamers, grooving inserts, indexable inserts with PCD tipping as well as a special exchangeable insert system for Escomatic machines from Dieterle are used on these machines. Dieterle tools



Workpiece made of precious metal for flow measurements in analytics and medical

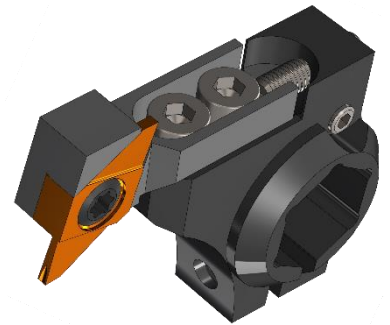
achieve high accuracy when drilling, reaming, contour turning, and parting off precious metal workpieces. In addition, the profile-specific form grooving tools, which were specially developed for C.HAFNER by Dieterle, guarantee short throughput times and high process reliability.

[Customized form drills and reamers](#) developed according to drawings are available from Dieterle in a wide variety of designs. The technical parameters of the tools are adapted to the workpiece and the material to be machined. As a result, several work steps can be combined into one when manufacturing a workpiece and costs can be reduced.

[Grooving inserts and indexable inserts with PCD tipping](#) can be easily selected and directly requested on the Dieterle website via filter and search functions. Form grooving tools are also available with PCD tipping on request.

Dieterle's [interchangeable insert system, specially developed for Escomatic machines](#), consists of base holders for the various types of Escomatic machines, tool holders for the various interchangeable inserts and the cutting geometries required for each application. These tools can also be easily selected online using filter and search functions and requested directly. In addition to a large number of indexable inserts from the standard program, customer-specific profiled indexable inserts are also available.

C.HAFNER and Dieterle are looking forward to a continuing good cooperation in order to achieve optimum results in the processing of precious metals.



Interchangeable insert system  
for Escomatic machines



## Contact:

C.HAFNER GMBH + CO. KG  
Gold- und Silberscheideanstalt  
Maybachstraße 4  
71299 Wimsheim  
[info@c-hafner.de](mailto:info@c-hafner.de)  
[www.c-hafner.de](http://www.c-hafner.de)



Otto Dieterle Spezialwerkzeuge GmbH  
Predigerstr. 56  
78628 Rottweil  
Tel.: +49 (0) 741 94205 0  
[info@dieterle-tools.com](mailto:info@dieterle-tools.com)  
[www.dieterle-tools.com](http://www.dieterle-tools.com)



## Company portrait:

Otto Dieterle Spezialwerkzeuge GmbH manufactures high-precision turning, drilling, milling and broaching tools and has been a respected partner for companies in precision engineering, medical technology and the automotive supply industry for over 60 years.

The company was founded in 1962 by Otto Dieterle in Rottweil, Germany. Over the years, extensive investments have been made in machinery and testing equipment, and numerous tool developments have been created in close cooperation with customers. Today, customers of Dieterle can obtain their tooling needs almost completely from a single source.

In 2013, the company moved into a new, modern administration building. The current managing directors are the sons of the company founder, Michael and Stefan Dieterle, and the daughter Petra Dieterle-Müller, with a team of over 60 employees. As a traditional family business with Swabian roots, Dieterle attaches particular importance to customer proximity, reliability and short delivery times.